

Innova Release Notes

Version: 6.0.2

Publication Date: 02 Nov 2023

Highlights

This version of the New Innova Release contains the Innova Platform and selected products and modules, including a number of additional application modules that were made available in this release. See New in this release.

Included in this release

The following Innova modules and products are included in this release from version 6.0.1:

Innova module	Module version	Product name	Disclaimer
Base	5.1.4		
Process	4.2.0	Innova Final Goods Manager	
		Innova Inventory	
		Innova Labeling	
		Innova Order Manager	
		Innova Time Registration	
Data Visualization	2.1.2		
CLS	1.3.0	<i>Innova Chiller Logistics System</i>	<i>Generally available but requires Engineering support</i>
Grading	2.1.2	Innova RoboBatcher	
		<i>Innova Accuro</i>	<i>Generally available but requires Engineering support</i>
		<i>Innova Grader</i>	<i>Generally available but requires Engineering support</i>
		<i>Innova Compact Grader</i>	<i>Generally available but requires Engineering support</i>
		<i>Innova Flowscale</i>	<i>Generally available but requires Engineering support</i>
		<i>Innova SmartSort</i>	<i>Generally available but requires Engineering support</i>
Integration	1.2.1	Innova Integration Services	

Innova 6.0.2 Release Notes

OptiPack	2.1.2	Innova Packing	
		Innova Mcheck2	
		<i>Innova Multihead Weigher</i>	<i>Generally available but requires Engineering support</i>
		<i>Innova SpeedBatcher</i>	<i>Generally available but requires Engineering support</i>
		<i>Innova TargetBatcher</i>	<i>Generally available but requires Engineering support</i>
Portioning	1.0.7	Innova Flexicut	
		<i>Innova I-Cut (single lane)</i>	<i>Generally available but requires Engineering support</i>
QC	1.4.2	Innova Quality Control	
SensorX	2.0.2	Innova SensorX Poultry	
SIS	1.5.1	<i>Innova Primary Pork Processing Software</i>	<i>Generally available but requires Engineering support</i>
WPL	1.2.6	Innova WPL	
		Innova Inline OCM 9500	
<i>Trimming</i>	<i>3.0.1</i>	<i>Innova Trimming</i>	<i>Generally available but requires Engineering support</i>
		<i>Innova Manual Trimming</i>	<i>Generally available but requires Engineering support</i>
		<i>Innova Fish Streamline 900</i>	<i>Generally available but requires Engineering support</i>
		<i>Innova Poultry Streamline 900</i>	<i>Generally available but requires Engineering support</i>
Unit Operations	2.0.0		
Web UI	2.0.3		
Yield	2.1.0	Innova Yield Control	

Innova 6.0.2 Release Notes

New in this release

The following application modules were also added as part of the New Innova Release in version 6.0.2:

Innova module	Module version	Product name	Disclaimer
SIS	1.5.1	Innova Primary Processing Software (IPPS)	
CLS	1.3.0	Chiller Logistics System (CLS)	
Decision Matrix	1.2.1		
Weighbridge	2.0.0		Released to support SIS and CLS. Not tested to be used as a standalone product.
BoxSorter	1.3.2		
Deboning	2.0.2	Meat Streamline	
Innova OEE	3.0.1	Innova OEE	Released to support IMPAQT and PDS. Not tested to be used as a standalone product.
IRIS	2.0.1	IRIS	
SmartWeigher	2.0.0	SmartWeigher	
Innova Web	2.0.0		Released to support other modules
Innova PDS	3.3.1		Released to support other modules

Base

Module: 5.1.0

Changes in this release are from module version 5.0.0 to 5.1.4.

New features and improvements

The following new features and improvements to functionality were added:

Support for HEC resolution on IPCs

The WinUI for IPCs can now be opened in more resolutions. Previously, IPCs only supported a resolution of 1024 x 768 pixels. Now, HEC IPCs with SVGA resolutions of 1280 x 1024 pixels are supported in the Innova Base IPC components.

To open an IPC in a resolution other than the default 1024 x 768, a new optional parameter, **-R**, was added to the WinUI command line. For example, a typical command line to open the WinUI on an HEC would look like this:

- **WinUI.exe -i 9 -P IPC -R HEC**

If the **-R** parameter is omitted or the resolution given is not understood, the IPC software will open in the default configuration. No changes need to be made to any current installation because of these changes.

Note that even if the Base controls for IPC have been updated to support arbitrary resolutions, forms from different applications may not support this yet. In that case, the application screens may look skewed when opened with a different resolution than the default one.

InterpreterScale can now receive alibi numbers

InterpreterScale can now receive and record alibi numbers. This is configured using the new **AlibiAi** configuration property.

Input Fields component improvements for higher screen resolutions

To enable WinUI for IPC to support HEC resolutions, the following were added to the **Input Fields** component:

- Auto detect if page buttons can be hidden
- Auto detect how many buttons can fit on the list panel.
- Add column count

See Support for HEC resolution on IPCs

Support for IO devices

Support was added for the MCC Digital I/O board.

Read Logiflex message attribute as barcode

A new barcode device can be configured from the output of a Logiflex device. The device is not physical, but it behaves like any other barcode reader for users of the barcode reader interface.

1. In **Devices**, add two devices in the following order:
 - a. Device 1: Logiflex BMS device (Pluto Generic Device)
 - b. Device 2: Barcode Reader
 - Device type: Barcode reader
 - Device drive assembly: Marel.Mp6.Base.DeviceDrivers
 - Device driver type: Marel.Mp6.Base.DeviceDriver-s.BarcodeReader.BarcodeLogiflexDriver
3. Add the LogiFlex BMS device as the **Parent** device to the **Barcode reader** in the device table and ensure the following:
 - The Barcode reader must have the same Device router as the parent.
 - Both devices must have the same IP address.
 - The barcode reader must have a higher Device ID number than the parent.

Id	Active	Name	Short	Interface type	Device type	Status	Device type from device	Address	Interface parameters	Device router	WebSocket server	Serial number	Parent device	Device driver assembly	Device driver type
2795	✓	L1 BMS	DCP30.1	TCP/IP Marel	Pluto generic device	On-line	Pluto generic device	10.51.64.20		L1 Router		123		Marel.Mp6.Base.DeviceDrivers, Version=5.1.0.0	Marel.Mp6.Base.DeviceDrivers.Pluto.PlutoDriver
2817	✓	L1 BMS Barcode	L1 BMS Bar	TCP/IP Other	Barcode reader	Not set		10.51.64.20		L1 Router			L1 BMS	Marel.Mp6.Base.DeviceDrivers, Version=5.1.0.0	Marel.Mp6.Base.DeviceDrivers.BarcodeReader.BarcodeLogiflexDriver

4. Configure the device with the appropriate **MessageTopic** to subscribe to and from Logiflex and with the **AttributeName** of where the barcode is in the message.

Bug fixes

The following bugs were fixed:

Billboard application does not start

Previously, the Billboard application did not start and returned the error message "User authentication failed". This has been fixed.

Pivot report filters

The following changes were made to fix an issue with pivot report filters:

- Added blockers on layout and resize events when controls are being added to layout control and initialized
- Added a fix for lookup controls if the **Clear** button is disabled

Findings input field exception

When trying to load the first carrier item, the control panel on the findings input field threw an exception. This has been fixed.

Client license checker closes WinUI if network connection is lost

The client license checker closed the WinUI when the network connection was lost. Now the WinUI doesn't close if checking for a license throws an exception, and the exception is only reported once.

VNC Viewer throws exception multiple times when connection is lost

Innova was throwing an unhandled exception multiple times when VNC Viewer was disconnected. Now if the host is reachable, VNC Viewer connects to VNC server on the remote machine/device. To terminate the connection, click **Disconnect** or close the tab.

WinUI does not give an indication that a license is about to expire

There was no indication in the WinUI when a license key was about to expire in a few days. Now the system checks for license expiry dates once a day and displays a dialog if the license is about to expire.

SpRunnerSch does not execute SP

SpRunnerSch was not executing the stored procedure. Now **SpRunnerSch** runs successfully on scheduled time and executes the stored procedure configured in the XML.

SpRunner not running

An issue with **SpRunner** not running was fixed. Now **SpRunner** runs successfully and executes the stored procedure configured in the XML.

Longpress is no longer refreshing UI.WebSocket

Longpress in **UI.WebSocket** applications was no longer working. Now it reloads the iframe instead of the top window.

Row highlighting in the Orders view

Previously, the **GridConditionalFormatting** view extension did not appear in grid views. Now rows in grid views can be highlighted in different colors
In this example of the Orders view, **Status = Dispatched** is highlighted in green and **Status = Closed** is highlighted in yellow.

Name	Short	Code	Priority	Customer	Customer code	Numbering	Type	Accepts	Status	Start time	End time	Dispatch time	Active	Dimension 1
0503 KALV...	Master	pror151464				Own numb...	Sales	By List	Dispatched			21.9.2020 ...	<input checked="" type="checkbox"/>	7
						Own numb...	Production	By List	Closed				<input checked="" type="checkbox"/>	
1	test 1	1	100			Own numb...	Sales	By List	Complete & closed			30.6.2019 ...	<input checked="" type="checkbox"/>	7
100000 AB...	100000	100000		AB Caterin...	72224224	Own numb...	Sales	By List	Not confirmed			10.4.2017 ...	<input checked="" type="checkbox"/>	
100001 Ve...	100001	100001		Vestergad...	100012	Own numb...	Sales	By List	Dispatched			4.4.2017 0...	<input checked="" type="checkbox"/>	5
100002 Me...	100002	100002		Mett 's v/M...	26295633	Own numb...	Sales	By List	Complete & closed			6.4.2017 0...	<input checked="" type="checkbox"/>	
100003 Su...	100003	100003		Superbrug...	59650002	Own numb...	Sales	By List	Closed			4.4.2017 0...	<input checked="" type="checkbox"/>	
100004 Ve...	100004	100004		Vemb Slagt...	97481622	Own numb...	Sales	By List	Complete & closed			4.4.2017 0...	<input checked="" type="checkbox"/>	
100005 Sa...	100005	100005		Søren Fris ...	38321100	Own numb...	Sales	By List	Complete & closed			4.4.2017 0...	<input checked="" type="checkbox"/>	
100006 Fr...	100006	100006		Frost Supe...	87251822	Own numb...	Sales	By List	Dispatched			6.4.2017 0...	<input checked="" type="checkbox"/>	5
100007 Kaj...	100007	100007		Kaj Madse...	75128495	Own numb...	Sales	By List	Complete & closed			4.4.2017 0...	<input checked="" type="checkbox"/>	5

Unable to run multiple instances of wserver

It was not possible to run two instances of **wserver**. To fix the issue, the registration for **wserver** in the **spinterfaces** table was updated so that each instance now has a unique name. Note that when running multiple **wsservers**, you need to set the **UINames** configuration in the system program to the menu items that the **wserver** should manage.

User has to login twice after idle logout timeout reached

Each time "User A" logged in to an IPC UI and the **LogoutIdleTime** was reached and the user was automatically logged out of the screen, "User B" got an "Employee has been logged out" message after logging in and had to log in again to continue working. Now employees are logged out of the station when the logout idle time has elapsed.

Top 10 Alarms report does not work

There was an error when retrieving the **Top 10 Alarms** report because the SQL files were not Embedded Resources. To fix the issue, the properties of all the SQL files in the Top 10 folder were changed.

Add a barcode to a RecWeight message

It's now possible to add a barcode to the **RecWeight** message to create a (trackable) **proc_scale-record** record.

Changes to the order in which devices are loaded by Mp6Router

Previously, devices were selected and ordered by name. Now that there is a **Parent** column in the device table, which is used when a device driver needs to use another driver that's defined as the parent, the parent driver must be run before the child driver is initialized. The result is that parent devices are now loaded and initialized first, then by Device ID.

Add field to RecGraderPiece

The field `stationLabel` was added to `RecGraderPiece`.

Could not change display order in PDA view

Previously, it was not possible to rearrange the view order of actions in `Marel.Mp6.Process.UI.Pda.ProcessPdaCE`. You could change it in the designer, but nothing was saved and it reverted to the original when refreshed. This has been fixed.

Data Visualization

Module version: 2.1.2

Changes in this release are from module version 2.0.0 to 2.1.2.

New features and improvements

The following new features and improvements to functionality were added:

Live dashboards now reconnect automatically if the data is not refreshed

An automatic reconnect of a signalr connection now occurs if no data is received for a set number of seconds.

Thumbnails were added for dashboard templates

When exporting a dashboard to a template, the thumbnail, X and Y positions will be added to the database and displayed when loading the dashboard template on the landing page.

Bug fixes

The following bugs were fixed:

Boundaries detection on curser key movement did not work correctly with layer index

Using the keyboard to move dashboard components didn't work correctly with the layer index. This has been fixed.

To use the keyboard:

- ARROW KEYS: change X/Y position by 1 or with CTRL by 5
- ARROW KEYS + SHIFT: Change size by 1 or with CTRL by 5
- CTRL + ALT + ARROW UP /ARROW DOWN: Change layer index
- DELETE: Delete component
- INSERT: Clone component with same data source
- INSERT + SHIFT: Clone component with new data source
- SPACE: Toggle drag mode over full area

Note that you can handle dashboard components using the keyboard only if you see this sym-



bol in the component:

Import dashboard: Cannot read properties of null

Exporting a dashboard and then importing it as a new dashboard before saving it caused an error. This has been fixed.

Edit appearance: Cannot read properties of null

The **Edit appearance** tab of a grid cell displayed an error when you accessed it before saving the dashboard. This has been fixed.

Web reporting not working

Web reporting was not deployed in a release version. This was fixed and Web reporting is now working again after using the installer.

Closing data source designer causes "Changes you made may not be saved" alert

A browser pop-up that appeared when closing the browser after saving changes in the data source designer was fixed.

Not possible to set a default category name in the data source type

An issue with setting a default category name in the data source type that was installed via **baseop** was fixed.

Grading

Module version: 2.1.2

Changes in this release are from module version 2.0.2 to 2.1.2.

New features and improvements

The following new features and improvements to functionality were added:

LogiflexTakeaway - rejected batches should support multiple locations

Multiple reject locations are now supported for Logiflex Takeaway.

Optional batch timeout

Optional batch timeout and extra change request locations functionality were added to the LogiflexTakeaway grading plugin.

Bug fixes

The following bugs were fixed:

Grading KPI dashboard component

The **Grading KPI** Data Visualization dashboard component was not getting data in the **Timespan** panel. This has been fixed.

Grading Quick Config not available

The Grading Quick Config functionality is now available and can be found in the Toolbox.

Error when trying to add the view Marel.Mp6.Grading.Reports.GradingWithCheckWeighing.CheckWeighingComparison

The Grading **CheckWeighingComparison** report no longer shows a configuration error when adding the view.

Error when stopping gsman on the WF grader

Prevented an exception being raised when a **gsman** system program is shut down. The problem was in Base and only occurs when a trace object is undefined.

RoboBatcher - Error when opening dashboards

An error that occurred when opening selected dashboard views was fixed.

Importing the robotflex UI package does not work

The robotflex UI package did not import correctly. This has been fixed.

Marel.Mp6.Grading.UI.Windows.Setup.RoboBatcherFlex in wrong UI package

Marel.Mp6.Grading.UI.Windows.Setup.RoboBatcherFlex was previously in the Grading UI package, which was incorrect. It was moved to the robotflex UI package.

Discrepancies in Grading reports

Discrepancies in data, graphs, sums and overall look and feel that occurred in some Grading reports in the New Innova Release were fixed.

GradingWithCheckWeighing.CheckWeighingComparison report query error

When running the report there were errors in log and data was missing in the report. This was fixed.

Integration Services

Module version: 1.2.1

Changes in this release are from module version 1.2.0 to 1.2.1.

New features and improvements

The following new features and improvements to functionality were added:

Add Basic Authentication to WSEExportManager

A new configuration property, **AddBasicAuthHeader**, was added to **ExportToWebServiceHandlerConfiguration**.

Innova 6.0.2 Release Notes

XML	Name	Short	Executable	Executable type	Directory
 wse	=	...
	Web Service Export Manager	Web Servic	WsExportHandlerApplication.exe	Standalone executable	

XML

```
1 <DataRoot>
2 <Marel.Mp6.Integration.Services.ExportEngine.WS.ExportHandlerConfiguration>
3 <!--Multiple export type configurations-->
4 <ExportToWebServiceHandlerConfigurations>
5 <ExportToWebServiceHandlerConfiguration>
6 <!--Unique id for the web service export type. Indicates where data will be sent, StagingExportHandlers reference this id.-->
7 <ExportType>2</ExportType>
8 <!--Max number of records to export-->
9 <MaxRecordCount>5</MaxRecordCount>
10 <!--Max number of retries to export-->
11 <MaxRetryCount>3</MaxRetryCount>
12 <!--CRON based schedule string-->
13 <Schedule>*/30 * * * * </Schedule>
14 <!--Interval between retries-->
15 <RetryInterval>30</RetryInterval>
16 <!--Url of the web service-->
17 <Url>http://10.10.10.8200/sap/</Url>
18 <!--Optional parameter, the soap action if the web service requests it-->
19 <SoapAction>urn:sap-com:document:sap:rfc</SoapAction>
20 <!--Optional parameter, the content type the web service needs, Default is: text/xml;charset="utf-8"-->
21 <ContentType>text/xml; charset=utf-8</ContentType>
22 <!--Optional parameter, user name for credentials-->
23 <UserName>Innova</UserName>
24 <!--Optional parameter, password for credentials-->
25 <Password>PaSSword123</Password>
26 <!--Indicates whether to manually add basic Authorization header with the request, using the supplied username and password.-->
27 <AddBasicAuthHeader>True</AddBasicAuthHeader>
28 <!--Optional parameter, list of extra header parameters-->
29 <ExtraHeaderParams />
30 <!--The request method to use for the web service call. Default is: POST-->
31 <MethodType>POST</MethodType>
32 <!--The authentication token configuration, if required-->
33 <AuthTokenConfiguration>
34 <!--Is authentication token required for web service method-->
35 <TokenRequired>False</TokenRequired>
36 <!--The web service's endpoint URL used to retrieve authentication token-->
37 <AuthenticationUrl />
```

If **True**, the username and password credentials supplied in the configuration will be added as basic authorization in a web request header, for example:

```
{accept-encoding=[gzip,deflate], authorization=[Basic SW5ub3Zh0kZy-aW1lc2FJbm5vdmFBC3Npcw==], connection=[Keep-Alive], content-length=[1012], content-type=[text/xml;charset=UTF-8], host=[127.0.01:8080], soapaction=[""], user-agent=[Apache-HttpClient/4.5.5 (Java/16.0.1)]
```

Innova 6.0.2 Release Notes

Bug fixes

There are no bug fixes in this release.

OptiPack

Module version: 2.1.2

Changes in this release are from module version 2.0.1 to 2.1.2.

New features and improvements

The following new features and improvements to functionality were added:

Print optimization

A new configuration property, **PreloadLabels** was added to the Pack Queue XML to enable labels to be pre-loaded for faster printing in BMS solutions.

Improve error handling when PU activity is not set

Improvements were made to the third-party checkweigher controller in order to trace whether it's possible to determine which product to register a piece to, either from the message or the active process unit.

BomYield screen

The **BomYield** screen was reenabled in the M2200 terminal controller.

Bug fixes

The following bugs were fixed:

Product Queue Station is not loading from queue

An issue was fixed on the **UltimatePacking** station where a list of queued items didn't show up on the station.

Ultimate Station OrderLine Selection not available

The **Ultimate Station OrderLine Selection** was not available due to the back end not loading the order lines correctly. This was fixed.

UltimateOrderlineExpandStationView selection filters

Fixes were made for **ProductSelectionFilters** in the **UltimateOrderlineExpandStationCE** so they now work correctly on the station.

Additional configuration properties were added to make QOL better on the station:

- **OrderlineSortingMethod** - An order for the order line buttons. Note that this will override the order from the packing service.
- **ReselectProductOnOrderlineCompleted** - Reselects the same product when an order line completes. The first button is selected.

UltimateOrderlineExpandStationCE Close Order Line doesn't reload orders

UltimateOrderlineExpandStationCE Close Order Line didn't reload orders, even though it should. This was fixed.

Dynamic filtering issue

Filters were resetting after creating a product and closing the order line. This was fixed.

ExpeditingStation using Crates Wrong Tare on Items

When the IPC created an item from an FLS crate record, its tare had the wrong value on the same pack. This was fixed by excluding the pack tare when creating an item from pack.

Ultimate Order Line Expand Station unhandled exception

An issue on the Ultimate Order Line Expand Station where an unhandled exception was shown then the last order line was closed manually was fixed.

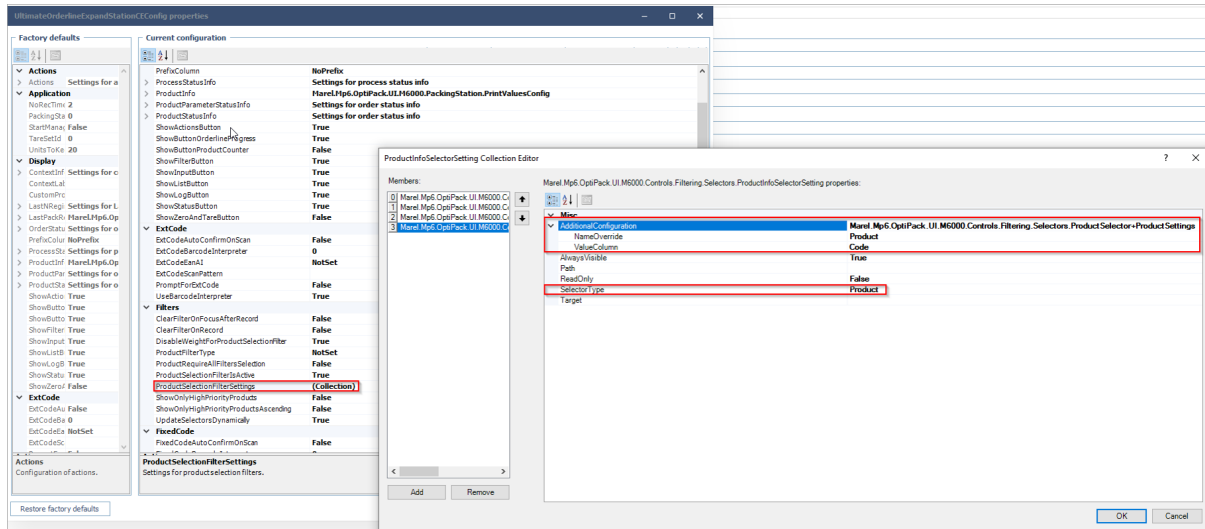
Ultimate Expand Station Filter - different values in the label and filter

An issue in the Ultimate Expand Station Filter where values in the label and filter didn't match was fixed.

Ultimate Expand Station Filter - Product filter cleared after first pack

To fix this issue, the new **SelectorType** configuration property was added for product filtering on **UltimateStation**.

Note: To get the new ProductSettings AdditionalConfiguration when changing from the ProductOrderline selector to Product, you must remove and re-add the **SelectionFilter**.



Ultimate Expand Station Filter - Product filter cleared when selecting order lines from same order

An issue with product filters in the Ultimate Expand Station Filter was fixed.

Label preload feature prevents other print steps in same UO set

An issue with the label preload feature was fixed.

Product list change makes station misbehave

Functionality was improved when packing on orders. When a new order is assigned or unassigned to/from the process unit, the products on the order show up on the station. The **UpdateOrderInterval** property specifies the interval between checks if there is a change the list is updated on the station. The minimal interval is 10 secs.

The new configuration property **DoNotReloadProductListImmediatelyWhenCleared** should be set to "True" to reduce the load on the service (packservices.exe or packscases.exe)

This change affects both M2200 packing stations and Ultimate Stations.

Ultimate Packing Station Filter creates a bad behaviour when used

A new configuration property was created for the Ultimate Station:

Marel.Mp6.OptiPack-

.UI.M6000.PackingStation.UltimateStationCEConfig.WeightDifferenceToTriggerFiltering - If set to "True", then the filtering is triggered only when the scale returns the following difference in stable weight. If the Ultimate Station is configured to have conditional filters based on the product weight, then it's re-filtered only when the configured weight change is detected.

Innova 6.0.2 Release Notes

WinUI stops responding when trying to open Packing > Parameter template

A bug was fixed that caused the Win UI to stop responding when opening the **Packing > Parameter template** page.

Portioning

Module version: 1.0.7

Changes in this release are from module version 1.0.3 to 1.0.7.

New features and improvements

The following new features and improvements to functionality were added:

Salmon Filleting - Config for hiding weight from reports

A configuration property was added to the **Portion summary** report (Marel.Mp6.Por-
tioning.Reports.Ipm.PortionSummary). If set to **True**, weight is hidden in the report. The default
setting is **False**.

Remove OEE and SalmonSlicer Line support

OEE and some SalmonSlicer Line support has been temporarily removed from this release.

Bug fixes

The following bugs were fixed:

Quick config programs are created twice after import for dual lane machines

An issue was fixed where Quick Config programs from dual lane machines like I-Cut 610M were
created twice after importing them.

No column definitions found for table ipm_130_ProgramGate

A bug was fixed that caused this message in the log: "No column definitions found for table
ipm_130_ProgramGate. ColumnCache has probably not been initialized".

Innova FlexiCut does not record from gate 0

Flexicut machines are set up with a gate 0 worldwide but Innova was not able to record product
transaction data for portions going to gate 0. This has been fixed.

Reports on Operation events open with no title and no data

When opening reports using Marel.Mp6.Por-
tioning.Reports.Ipm.OperationEvents.OperationEvents, e.g. Operation events, daily and

Operation events, historic, the reports opened with no title, empty headers and no data in body. This was fixed.

Error when opening Portioning reports on Piece throughput daily/historic over time period where there is no data

When opening reports using Marel.Mp6.Por-
tioning.Reports.lpm.PieceThroughput.PieceThroughput, e.g. Piece throughput, daily and Piece throughput, historic, with no data for the selected time period, an "index was out of range" error occurred in the log. This was fixed.

Reports not showing all lines on graphs

In Portioning Piece/Portion summary/details reports, lines were only shown on graphs for the first Lane/Program/Product section. This was fixed.

Process

Module version: 4.2.0

Changes in this release are from module version 4.0.1 to 4.2.0.

New features and improvements

The following new features and improvements to functionality were added:

Add proc_individuals QA marks table

A new table, **proc_individualqamarks**, was added. It links QA marks to individuals and allows for more than four QA marks to be assigned to an individual.

A read-only **QA marks** detail tab was also added to the **Individuals** view:

Innova 6.0.2 Release Notes

The screenshot shows the 'Individuals' interface. At the top, there is a tab labeled 'Individuals' with a close button. Below it is a dropdown menu set to 'Default', a 'Clone' button, and a filter icon. A filter bar shows 'Registration time (range)' with the value '17.6.2020 00:00 - 15'. Below this is a table with columns 'Registration time', 'Breed', and 'Born in'. The table contains several rows of dates and times. One row, '3.8.2022 10:26', is highlighted with a mouse cursor. Below this table is a 'QA marks' table with columns 'Qa mark' and 'Sequence'. The 'QA marks' table has four rows: 'Highest quality', 'Lower quality', 'Lowest quality', and 'Normal QA Mark'. The 'Normal QA Mark' row has a value of '3' in the 'Sequence' column. A red box highlights the 'QA marks' table.

Registration time	Breed	Born in
3.8.2022 15:55		
15.8.2022 09:52		
15.8.2022 10:03		
22.11.2022 13:00		
→ 3.8.2022 10:26		
3.8.2022 15:51		

Qa mark	Sequence
Highest quality	
Lower quality	
Lowest quality	
→ Normal QA Mark	3

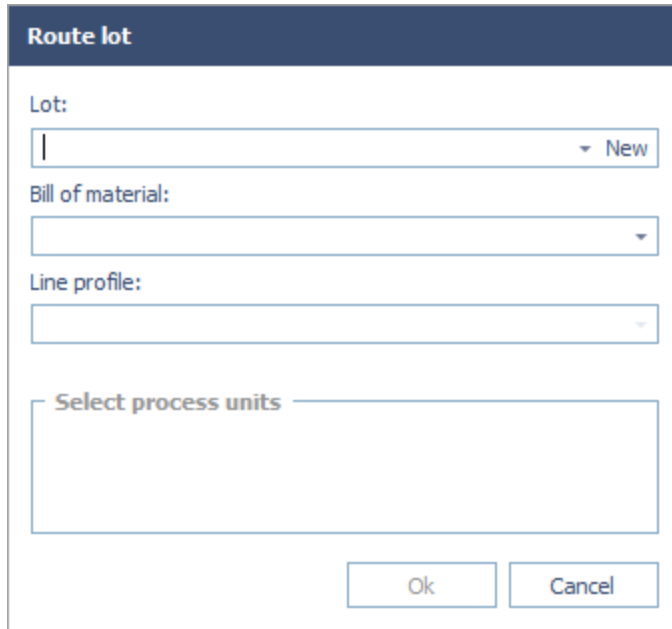
Note that this table may interfere with the existing four QA mark columns in **proc_individuals**. Setting one of the QA mark columns in **proc_individuals** is not reflected in **proc_individualqamarks** and vice versa.

Add 600DPI option on Zebra Printers

An option was added to manually select the DPI setting for Zebra printers.

Add BOM to the created lot in Line Profiler

Now a Bill of Material (BOM) can be set on the lot when creating a new production run (lot and line setup) or when rerouting a lot.



The 'Route lot' dialog box features a dark blue header with the title 'Route lot'. Below the header, there are four input fields: 'Lot:' with a text box and a 'New' button; 'Bill of material:' with a dropdown menu; 'Line profile:' with a dropdown menu; and 'Select process units' with a larger text area. At the bottom, there are 'Ok' and 'Cancel' buttons.

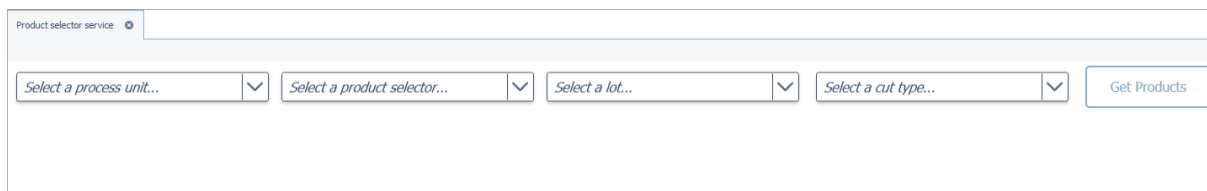
Configure what to log in Unit history

Unit history now only logs the columns that the system is configured to monitor. A **Configure** button was added to the **Unit History** view to allow users to configure which columns should be monitored for a given unit type. Monitoring is updated by clicking **OK** in the dialog.

To access the new button, you must have **Process.Configuration.UnitHistory.CanChangeMonitoring** execute privileges. The system can also be default configured using **loaderdata** targeting **proc_unithistoryconfiguration**.

Product selector view refactored

The **Product selector service** view is intended for testing outputs with product selectors. Changes were made to the UI to improve readability and ease of use, and different output views were added.



The 'Product selector service' view has a title bar with the text 'Product selector service'. Below the title bar, there are four dropdown menus with the following labels: 'Select a process unit...', 'Select a product selector...', 'Select a lot...', and 'Select a cut type...'. To the right of these dropdowns is a 'Get Products' button.

Four drop-down fields are selectable:

- Available process units
- Available product selectors
- Available lots
- Available cut types

Lots and **cut types** are optional fields, but a **process unit** and a **product selector** must be selected before you can fetch products. Selecting "none" in the lot and cut type fields means that they are optional and null selection is possible. Information about the current selection is displayed below each field. Once a valid selection is made (i.e. both the process unit and product selector are selected), the **Get Products** button becomes available. Press **Get Products** to fetch products with the selected parameters.

After products have been fetched, you can select from three different data views: Buttons View, Grid View and JSON. Selecting a view changes the view output. Expected output parameters are shown on the screen so that it's always clear which parameters were used for the current output.

Buttons View is the default view. In this view, products are displayed in a button matrix with only the product name and code visible, similar to the layout of an IPC screen. If there are too many products to fit on a single page, navigation buttons become available.

Cheese prma00002	Kex prma00003	Te prma00004	Appfel prma00007
Meira prma00005	Geit prma00008	Meet prma00006	Geit prma00008
Meira prma00005	Meira prma00005	Cheese prma00002	Appfel prma00007
Meet prma00006	Appfel prma00007	Te prma00004	Meira prma00005

Grid View shows products in an easy-to-read table, in the same order they were searched. You can also sort the order by column.

Innova 6.0.2 Release Notes

Buttons View		Grid View		JSON			
Process unit: Thing 1, Product selector: eh							
Id	Name	Code	Order Id	Order Line Id	Is Downgrade	System Type	
2	Cheese	prma00002			<input type="checkbox"/>	Primary	
3	Kex	prma00003			<input type="checkbox"/>	Primary	
4	Te	prma00004			<input type="checkbox"/>	Primary	
7	Appfel	prma00007			<input type="checkbox"/>	Primary	
5	Meira	prma00005			<input type="checkbox"/>	Primary	
8	Geit	prma00008			<input type="checkbox"/>	Primary	
6	Meet	prma00006			<input type="checkbox"/>	Primary	
8	Geit	prma00008			<input type="checkbox"/>	Primary	
5	Meira	prma00005			<input type="checkbox"/>	Primary	
5	Meira	prma00005			<input type="checkbox"/>	Primary	
2	Cheese	prma00002			<input type="checkbox"/>	Primary	
7	Appfel	prma00007			<input type="checkbox"/>	Primary	
6	Meet	prma00006			<input type="checkbox"/>	Primary	

JSON view shows the data the way it was received, without formatting, as a serialized JSON output. The text can be copied and the screen is scrollable.

Buttons ViewGrid ViewJSON

Process unit: Thing 1, Product selector: eh

```
[
  {
    "Id": 2,
    "Code": "prma00002",
    "Name": "Cheese",
    "OrderId": null,
    "OrderLineId": null,
    "IsDowngrade": false,
    "SystemType": 5
  },
  {
    "Id": 3,
    "Code": "prma00003",
    "Name": "Kex",
    "OrderId": null,
    "OrderLineId": null,
    "IsDowngrade": false,
    "SystemType": 5
  },
  {
    "Id": 4,
    "Code": "prma00004",
    "Name": "Te",
    "OrderId": null,
    "OrderLineId": null,
    "IsDowngrade": false,
    "SystemType": 5
  },
  {
    "Id": 7,
    "Code": "prma00007",
    "Name": "Apffel",
    "OrderId": null,
    "OrderLineId": null,
    "IsDowngrade": false,
    "SystemType": 5
  },
  {
    "Id": 5,
```

Bug fixes

The following bugs were fixed:

Executing PowerShell scripts for Labels with pipeline error

A new configuration property was created in **ProductionConfig** in XML data store:

```
19 <!--True if powershell label scripts should use runspace pool to enable concurrent execution.-->
20 <UsePowerShellRunspacePool>False</UsePowerShellRunspacePool>
```

UsePowerShellRunspacePool is **False** by default, but when set to **True** it controls how PowerShell label scripts are executed. If the system gets Concurrent exceptions in the log when

executing many PowerShell scripts, this should be turned on to enable the concurrent execution of scripts. This can happen when there are multiple queueplc programs running many barcode scripts locally through printing unit ops, for example.

Weight/Nominal is incorrectly doubled in the Forward Trace report

A bug was fixed in the Traceability **Forward trace** report in where **Weight/Nominal** could be multiplied if the same lot appeared multiple times in the forward trace chain.

Order(line) status bug in Order manager view

In the **Order manager** view, the **Order status** and **Order line status** columns were being reset according to the XML configuration on **Activate** and the config designer was also broken. Now the **Order status** and **Order line status** columns are not editable. To edit the values, open the designer and select from there. If the lookup does not allow multi-select, the workaround is to type in values (for example, "Open", "Closed", etc.).

Wrong System type value

When adding products, the **System type** "Packaging" was returned when pressing **P** instead of "Primary". This has been fixed.

In **Products** (Marel.Mp6.Process.UI.Windows.Materials.Products):

- The list of **System type** values is filtered according to keys pressed in the field.
- If no **System type** value is available for the keys pressed, the entry can not be confirmed and there is a hint on "Invalid System type".
- Only the values **System type** list can be selected and confirmed.

QC

Module version: 1.4.2

Changes in this release are from module version 1.4.1 to 1.4.2.

New features and improvements

No new features and improvements to functionality were added.

Bug fixes

The following bugs were fixed:

PDA Inspection handler throws Null point exception

A bug was fixed in the **PDA inspection handler**. The error "A nullable object must have a value" was raised when the **ContextData** does not contain application value.

Problems with common QC for PDA and screen factories

An error that occurred with common QC for PDA and screen factories was fixed.

SensorX

Module version: 2.0.2

Changes in this release are from module version 2.0.1 to 2.0.2.

New features and improvements

The following new features and improvements to functionality were added:

Remove dependencies to OEE

OEE support has been temporarily removed from this release.

Don't always send program when device goes online

Sending a SensorX program from Innova to a device when the device came online after being offline or when the Innova service was started caused issues if SensorX had been running a different program while Innova wasn't connected. Now, instead of always sending the program when a device comes online, Innova requests the active program from the device and adjusts accordingly. When the device comes online, Innova activity is synchronized with the running program on the machine.

Bug fixes

The following bugs were fixed:

Issues with the Visual Production report

The **Visual Production** report was updated according to remarks from service. The traffic light indicator was fixed among other improvements.

Innova 6.0.2 Release Notes

Trimming

Module version: 3.0.1

Changes in this release are from module version 3.0.1 to 3.0.1.

New features and improvements

No new features and improvements to functionality were added.

Bug fixes

There are no bug fixes in this release.

Unit Operations

Module version: 2.0.0

Changes in this release are from module version 2.0.0 to 2.0.0.

New features and improvements

No new features and improvements to functionality were added.

Bug fixes

There are no bug fixes in this release.

Web UI

Module version: 2.0.3

Changes in this release are from module version 2.0.0 to 2.0.3.

New features and improvements

No new features and improvements to functionality were added.

Bug fixes

The following bugs were fixed:

WebUI menu items don't close

When the menus for Data Visualization, Reports and Marel Digital were opened in the Web UI, you could only close them again by clicking outside the Data Visualization panel. This has been fixed.

WPL

Module version: 1.2.6

Changes in this release are from module version 1.2.1 to 1.2.6.

New features and improvements

No new features and improvements to functionality were added:

Bug fixes

The following bugs were fixed:

Some configuration settings are not visible in the config editor

Some of the XML configuration sections were not visible in the configuration editor. This has been fixed.

Tare issue in OCM module

An issue with tare in the OCM module was fixed.

Error when clicking Ops button on WPL IPC

An error that occurred when clicking the **Ops** button on the WPL IPC was fixed.

Yield Control

Module version: 2.1.0

Changes in this release are from module version 2.0.2 to 2.1.0.

New features and improvements

The following new features and improvements to functionality were added:

Receive messages from Valka Cutter to Innova

The Innova Yield Control module can now receive messages from portion cutter devices. A new **PortionCutter** yield controller class was created that is executed by the **packscales.exe** system program. The portion attribute of a message is used to map it to a product in Innova (or add it to file if it does not exist). The record is then stored as a product transaction. This feature extends the functionality of the Generic Ethernet yield device.

Bug fixes

The following bugs were fixed:

Loader data and UI packages

Loader data and UI packages are now added correctly when a module is installed.

Saddle yield issues

Saddle yield is now stored correctly and a group header was added to the **Saddle Yield** report.