

Innova Release Notes

Version: 6.1.1

Publication Date: 17 May 2024

Highlights

This version of the New Innova Release contains the Innova Platform and selected products and modules available for new installations, including a number of additional application modules that were made available in this release. See New in this release.

Newly available for secondary processing

In secondary processing, **Hopper Distribution** is now available as part of the New Innova Release, as well as **Manual Trimming**.

New end-of-line solution and improvements

A new end of line solution is also introduced in this release, **Innova Crate and Box Distribution Solution**.

Innova Crate and Box Distribution Solution is an integrated solution for the registration of crates and boxes, including weighing. It manages the complete flow of products from infeed registration to order dispatch, using order control to handle the assignment and routing of crates and boxes. The solution is designed for all industries, is product-independent and can be adapted to any logistics layout.

In other end-of-line improvements, printer-specific settings are now available in **Labeling**.

Back office improvements

In this release, performance improvements were made to **Traceability** reports.

Included in this release

The following Innova modules and products are included in this release from version 6.1.0:

Innova module	Module version	Product name	Disclaimer
Base	6.1.2	Not a sold product	
Data Visualization	3.3.3	Not a sold product	
Process	5.2.1	Innova Final Goods Manager	
		Innova Inventory	

Innova 6.1.1 Release Notes

		Innova Labeling	
		Innova Order Manager	
		Innova Time Registration	
Web UI	3.1.2	Not a sold product	
Carrier View	3.0.1	Not a sold product	Included to support the CLS and SIS (IPPS) modules
CLS	2.0.2	Innova Chiller Logistics System	
Deboning	3.0.2	Innova Meat StreamLine	
Decision Matrix	2.0.0	Not a sold product	
Grading	3.1.0	Innova RoboBatcher	
		Innova Accuro	
		Innova Grader	
		Innova Compact Grader	
		Dynamic Order Control (see SPacker)	
		Innova Flexisort	
		Innova Flowscale	
		Innova SmartSort	
		Takeaway with Integrated Checkweigher	
		Takeaway with Terminal	
IMPAQT	3.1.0	Innova IMPAQT	
Integration	3.0.2	Innova Integration Services	
IRIS	3.0.2	Innova Intelligent Reporting, Inspection and Selection (IRIS)	
Monitoring	3.0.0	Innova Equipment	Included to support alarms in

Innova 6.1.1 Release Notes

		Monitoring	the IMPAQT product. The Equipment Monitoring product is not released.
OEE	4.0.2	Innova OEE	Included only to support IMPAQT. This release includes support for selected products only on request.
OptiPack	3.0.2	Innova Packing	Support for OEE in this release of OptiPack is available only on request.
		Box Management System (BMS)	Solution not sold as a standard product
		Innova Mcheck2	
		Innova Multihead Weigher	
		Packing Scale License	
		Innova SpeedBatcher	
		Innova TargetBatcher	
PDS	4.0.1	Innova PDS	Included to support the PDS functionality needed for IRIS, SmartWeigher (Abstraction module)
Portioning	2.0.1	Innova FleXicut	
		Innova I-Cut (dual lane)	
		Innova I-Cut (single lane)	
QC	2.0.3	Innova Quality Control	
SensorX	3.0.0	Innova SensorX Poultry	
SIS	2.0.3	Innova Primary Processing Software (IPPS) - Beef	
		Innova Primary Pro-	

Innova 6.1.1 Release Notes

		cessing Software (IPPS) - Pork	
SmartWeigher	3.0.2	Innova SmartWeigher	
Sol.BoxSorter	2.0.1	Not a sold product	
Sol.Fish	3.0.0	Innova Purchase Order Reweighing (Not a formal product)	
Sol.WFExport	2.0.1	Not a sold product	
Stork Solution	1.0.0	Not a sold product	
Trimming	4.1.0	Innova Trimming	
		Innova Manual Trim- ming	
		Innova Fish Streamline 900	
		Innova Poultry Stream- line 900	
		Innova Poultry Stream- line 1100	
Unit Operations	3.0.0	Innova Unit Operation Station	
Web	3.0.1	Innova Web	Included to support other modules
Weighbridge	3.0.0	Not a sold product	
WPL	2.2.0	Innova WPL	
		Innova Inline OCM 9500	
Yield Control	3.0.1	Innova Yield Control	
		Yield Registration Device	

Innova 6.1.1 Release Notes

New in this release

The following application modules were also added as part of the New Innova Release in version 6.1.1:

Innova module	Module version	Product name	Disclaimer
FLS	2.0.1	Innova Crate and Box Distribution Solution	
Sol.Hopper Distribution	1.1.0		

Base

Module: 6.1.2

Changes in this release are from module version 6.0.2 to 6.1.2.

New features and improvements

The following new features and improvements to functionality were added:

One-way communication with Marel Linear Oven using the Innova MODBUS device driver

A new device for `FP_LinearOvenModbus` was added to enable one-way communication to the Marel Linear Oven using the Innova MODBUS device driver.

Bug fixes

The following bugs were fixed:

OptiPack (M1100) - Strange weights statuses in the Device Trace are affecting registrations

The M1100 driver contained a bug where data from the device to Innova was not accumulated properly. This was fixed.

Not able to add users to Alarm groups

An error occurred when adding a user to the Notification Group under Alarm Groups. To fix the issue, set `IsVisible` to "False" for the `pluginFilter` in the AlarmGroups grid.

Quick Configs not rendered correctly

An issue was fixed where Quick Config views in the `ToolBox` were drawn incorrectly when Windows Font scaling was applied to one of the displays.

M1100 scale driver not loading M1100ServiceController

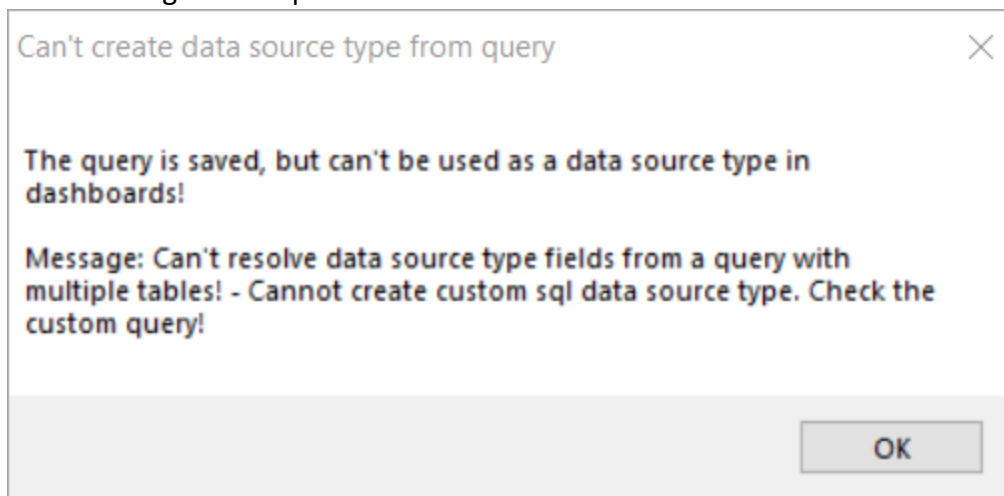
An issue was fixed where trying to send a program to the M1100 failed.

Incorrect column name used when creating XlatString

An issue with **StandardGrid CreateXlatString** where named lookups got the incorrect translation key (resource name) was fixed.

Improved error message when query generates two results

When a query is saved that has more than one result set, then the data source type for the query is not generated. However, the query is still saved to be used in reports. The improved error message was improved and now reads as follows:



CLS

Module version: 2.0.2

Changes in this release are from module version 2.0.0 to 2.0.2.

New features and improvements

There are no new features or improvements to functionality to report in this release.

Bug fixes

The following bugs were fixed:

Remove Marel.Mp6.Core reference

The **Marel.Mp6.Core** reference was removed.

Data Visualization

Module version: 3.3.3

Changes in this release are from module version 3.3.1 to 3.3.3.

New features and improvements

There are no new features or improvements to functionality to report in this release.

Bug fixes

The following bugs were fixed:

Criteria header in reports

The criteria header in a report is now refreshed if a lookup criterion has changed.

Selected criteria not displayed correctly on reports

The dropdown grid column configuration of a lookup criterion only showed the default field layout. This is now fixed. The layout that is set by the criterion editor is now initialized.

Report data not loading at initial load/filter

Previously, you had to click **Apply** twice in the criteria panel to filter web reports. This is now fixed.

DataVisualizationWeb and WebUiWeb not starting after installation

DataVisualizationWeb and **WebUiWeb** did not start after installation because of the wrong directory path from migration. This was fixed and it's no longer necessary to provide a directory of parameters. Progman will resolve the executable automatically.

For module versions older than 3.3.2, a workaround is available.

Dashboards not opening when accessing via IP address instead of host-name

An issue was fixed in Innova WebUI and Innova Data Visualization where URLs set up with host-names could not be accessed with an IP address and vice versa.

When using mixed origins, it's recommended that you change the menu view types from

Marel.Mp6.Base.UI.WinForms.CefSharp.CefCE to

Marel.Mp6.Datavisualization.UI.Dashboard.CefDashboardViewCE. If not using mixed origins, then no change is needed.

Migration from V5 database fails

If Innova Data Visualization migrations are executed on a migrated V5 database, then the migrations fails because some tables or columns does not existst yet. This is now fixed.

Criteria selection list is not shown completely

When creating a new dashboard, the full list of criteria wasn't shown. This is now fixed.

Can no longer delete dashboard template

An issue was fixed where dashboard templates could not be deleted.

Dashboard subtitles not displayed

The subtitle of the dashboard was not displayed after importing a dashboard file or using a dashboard template. This is now fixed.

Web report criteria cannot work with Chinese characters

An issue with web report criteria not working with Chinese characters was fixed.

Data Visualization loads DB server up to 100% every minute

A performance issue in PDC caused a CPU spike when showing the chillline content in the dashboards. This was improved by:

- Improving the query performance
- Not loading data for the dashboard components which are not visible
- Making sure the data for all visible components is not retrieved all at the same time

If a browser tab is inactive (via WebUI), then the live data connections will be disconnected. The connection is restored if the browser tab becomes active again.

You can add a trace to the **DataVisualizationService** to detect which user has opened a specific dashboard or landing page.

Innova 6.1.1 Release Notes

The screenshot displays the INNOVA Food Processing Software interface. The top navigation bar includes 'Reports', 'Dashboards', 'Planning', 'Production', 'Quality Control', 'Process', 'Master data', 'Auditing', and 'System'. The main content area is titled 'Trace for DataVisualization Service' and shows a list of system programs on the left and a log of events on the right. The log entries are as follows:

Service	Timestamp	User ID	Message
13 DataVisualizationService	4/25/2024 1:56:26 PM	[3]	Get all 35 dashboards
13 DataVisualizationService	4/25/2024 1:56:59 PM	[3]	Get dashboard 'Random data' with id 50
13 DataVisualizationService	4/25/2024 1:58:55 PM	[16]	Get all 35 dashboards
13 DataVisualizationService	4/25/2024 1:59:06 PM	[16]	Get dashboard 'Grading Criteria' with id 61
13 DataVisualizationService	4/25/2024 1:59:19 PM	[16]	Get all 35 dashboards
13 DataVisualizationService	4/25/2024 1:59:22 PM	[16]	Get dashboard 'Random data' with id 50

Annotations in the image include a red box around the user ID '13' in the third column of the first and fourth log entries, with arrows pointing to labels 'User ID' and 'Navigated to landings page' respectively.

Deboning

Module version: 3.0.2

Changes in this release are from module version 3.0.0 to 3.0.2.

New features and improvements

The following new features and improvements to functionality were added:

MultiBatchingStation to support 2 separation types: Base Item and Base Item Order at the same time

MultiBatchingStation now also supports SeparationType **BaseItemOrder** in addition to **BaseItem**.

MultiBatchingStation batching by units and by weight

MultiBatchingStation now supports batching by units and by weight.

Display process number of quarter on streamline terminals

The base item's process number is now displayed on Logiflex Streamline terminals.

Bug fixes

The following bugs were fixed:

M2200 Input Station - Unable to construct

An incorrect reference to the ScreenSystem property was fixed in the **BaseTerminalController** constructor.

wsserver - Marel.Mp6.Deboning.UI.WebSocket.Windows.DeboningBaseWebTerminalCE - AllowRecentItems visible only for "supervisor" or higher

A bug was fixed in web terminals when displaying piece options. Certain options should be displayed even if set to "False" in the config if the logged-on user has Administrator or Supervisor privileges. These options were not displayed but this has been fixed in version 3.0.1.

Deboning in ItemPackingBatchingStation

A bug was fixed in **ItemPackBatchingStation** where the **Close** button in the **Open Items** screen wasn't working.

Innova Deboning is able to register zero weights

An issue was fixed where Innova was able to register zero weights.

Deboning Employee Comparison report not filtering by prday

An issue was fixed where the Employee Comparison report was not filtering by prday.

LfxStreamline able to register zero weight

Two new deboning configuration properties were added to the **LfxStreamline** device controller:

- **IgnoreZeroWeightDischarge** - If active, the discharge request will be ignored (i.e. not sent down to Logiflex) if the buffer weight is zero or less.
- **IgnoreBelowMinBufferWeightDischarge** - If active, the discharge request will be ignored (i.e. not sent down to Logiflex) if the buffer weight is below the configuration minimum buffer weight (in workstation configuration).

Code	Name	Short	Site	Control program	Version	Active	SQL
bsery001	Deboning	Deboning	West Michigan Beef	Deboning Manager	20220519	<input checked="" type="checkbox"/>	A

Sequence	Description	Device	Controller	Lane	Assembly file	Class name
1	Streamline cut	Logiflex CUI	Streamline CUI	Two side	Marel.Mp6.Deboning.Services.Version=3.0.1.0	Marel.Mp6.Deboning.Services.Plugins.Logiflex.LfxStreamline
2	Batching cut	Logiflex CUI	Streamline CUI	Two side	Marel.Mp6.Deboning.Services.Version=3.0.1.0	Marel.Mp6.Deboning.Services.Plugins.Logiflex.LfxBatching

```

1 <!--DataRoot-->
2 <Marel.Mp6.Deboning.Services.Plugins.Logiflex.LfxStreamline.LfxStreamlineConfiguration>
3 <!--Use lot from piece as product type in drop requests, rather than the material id-->
4 <UseLotAsTypeInDropRequests>Marel</UseLotAsTypeInDropRequests>
5 <!--Use trim lot from piece as product type in drop requests, rather than the material id-->
6 <UseTrimLotAsTypeInDropRequests>False</UseTrimLotAsTypeInDropRequests>
7 <!--Use batch material from piece as product type in drop requests, rather than the material id-->
8 <UseBatchMaterialAsTypeInDropRequests>False</UseBatchMaterialAsTypeInDropRequests>
9 <!--Include animal slaughter day in drop requests-->
10 <IncludeAnimalSlaughterDayInDropRequests>False</IncludeAnimalSlaughterDayInDropRequests>
11 <!--Indicates if discharge request should be ignored if weight is zero-->
12 <IgnoreZeroWeightDischarge>True</IgnoreZeroWeightDischarge>
13 <!--Indicates if discharge request should be ignored if weight is under minimum buffer weight-->
14 <IgnoreBelowMinBufferWeightDischarge>True</IgnoreBelowMinBufferWeightDischarge>
15 <!--Simulation mode-->
16 <SimulationMode>Purge</SimulationMode>
17 <!--Number of seconds until product is discharged in simulation mode-->
18 <SimulationDischargeTime>3</SimulationDischargeTime>
19 <!--Buffer drop timeout in seconds-->
20 <DropTimeout>6000</DropTimeout>
21 <!--Simulation buffer weight-->
22 <SimulationWeight>0.5</SimulationWeight>
23 <!--Pulso instance name-->
24 <PulsoInstanceName>streamline.1</PulsoInstanceName>
25 </Marel.Mp6.Deboning.Services.Plugins.Logiflex.LfxStreamline.LfxStreamlineConfiguration>
26 </DataRoot>
    
```

In both instances, if either switch is active and criteria isn't met for the discharge request, a warning log is registered in Innova with stack trace details.

Innova 6.1.1 Release Notes



Grading

Module version: 3.1.0

Changes in this release are from module version 3.0.0 to 3.1.0.

New features and improvements

The following new features and improvements to functionality were added:

New batch progress report

A new report was added to use in combination with **Sensor X Accuro**. The report is included in the menu package that is installed with the **TMS Quick config**.

Bug fixes

The following bugs were fixed:

Good pieces excluded from `grd_piecelog` when Simple logging is enabled in `gsman`

An issue was fixed where good pieces were excluded when using the logging feature of the Grading module, which affected the usability of graphs and performance monitors on the dashboards.

IMPAQT

Module version: 3.0.0

Changes in this release are from module version 3.0.0 to 3.1.0.

New features and improvements

The following new features and improvements to functionality were added:

Add quick installer for adding missing reports and dashboards

A new quick installer was added to the Toolbox that adds all IMPAQT standard reports and dashboards for the selected entity to the menu.

Bug fixes

The following bugs were fixed:

Double availability loss due to failure in start up period

An issue was solved in the IMPAQT measurement that caused a double availability loss registration during the start-up period of the line.

This is the period in which the line is being filled but the start of the schedule has not yet arrived at the end of the line. If a failure occurred during this period, then the failure was registered, but a line restraint was also registered at a later time. This resulted in a double registration.

The double registration was caused by the fact that the schedule activation was delayed at the end of the line with a fixed time and did not take the failure period length into account.

This was fixed by ensuring that the end of line scheduled signal is now propagated through the line with the shackles instead of using a fixed time delay.

When the shackle that indicates the start of the scheduled period arrives at the end of the line, the signal is now raised. The signal map was also adapted to accommodate all line stop situations during the startup period.

This means that **Failure**, **Idle (line stop)** and specific **Restraint** (restraint out i.c.w. line stop) situations are registered as OEE events during the **Not Scheduled** startup period.

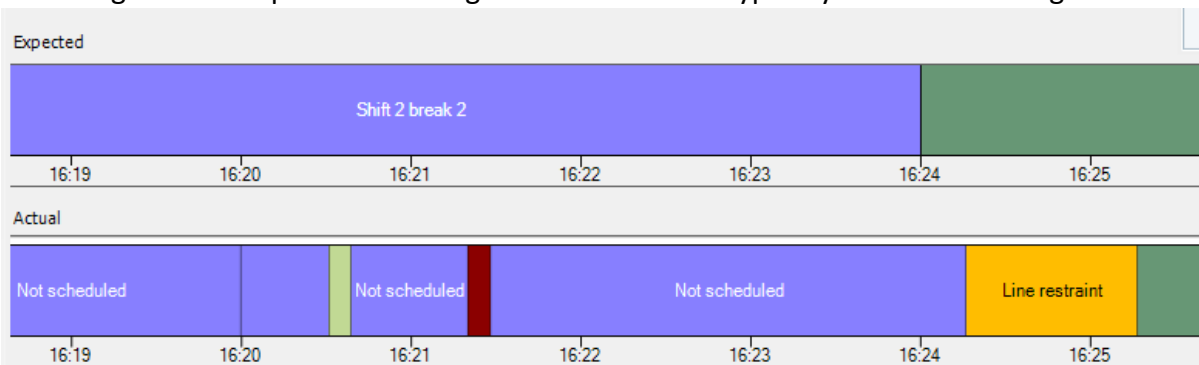
All these stops will delay the actual schedule from arriving at the end of the line so that it doesn't result in an invalid line restraint. If a real "line restraint in" occurs during the startup period, you will see this after those shackles arrive at the end of the line.

"Line restraint in" events are thus separated from the other events mentioned during the start-up period even if the events occur in sequence or between each other.

This is because the OEE constraint is at the end of the line while the other OEE events happen in the line and have a direct effect at the end of the line.

Example:

Following is an example of the change where the line is typically 4 minutes in length.



From the beginning of the line, the schedule started at 16:20:00. The line was running but with no product infeed. At around 16:21:10 products were added to the line.

Around 16:20:30 the line was briefly stopped for 10 seconds. At around 16:21:20 the line was stopped again with an active alarm for about 10 seconds resulting in a failure period.

The **Idle** period and the failure periods are registered now at the times they occur and are in total around 20 seconds in length.

From the end of line, the start of the schedule happens at around 16:24:20, while without any line stops it would be at around 16:24:00. The 20 seconds of line stops are thus taken into account.

From the beginning of the line, the "line restraint in" happened before and after the first line stop. But from the end of line, it is measured after the line became scheduled and those shackles came out of the line.

IMPORTANT

This change requires a reset of the signal map of every IMPAQT entity. If changes were made to the default map, note them down and make sure these changes are reapplied after reverting to the new standard signal map.

You can make the new default signal map visible from the **Operations** menu in the **Entities** view. You can also reset the signal map to the new standard signal map via the same menu.

No "line restraint out" by default signal map

The IMPAQT signal map for OEE measurement was fixed so that "Line restraint out" can be measured again.

Innova 6.1.1 Release Notes

The signal map has also been adapted around break periods so "line restraint out" can be measured around breaks in the correct way.

Additionally a rule/check on the **Has Products** signal from the signal map was removed because situation to which that rule/check applied was not valid.

IMPORTANT

This change requires a reset of the signal map of every IMPAQT entity. If changes were made to the default map, note them down and make sure these changes are reapplied after reverting to the new standard signal map.

You can make the new default signal map visible from the **Operations** menu in the **Entities** view. You can also reset the signal map to the new standard signal map via the same menu.

When plugin restarts, EOL signal not high

When the plugin was restarted and the EOL signal was already high, the signal was down after restart and stayed down until the new period started. This was fixed.

Pushbutton events not subtracted from PDT loss calculations in Primary dashboard

In the primary dashboard a fix has been made on the quality loss measurement called veterinarian rework at veterinarian workstations.

Here the pushbutton cabinet events that are normally registered as performance loss events were not subtracted from PDT losses that indicate this veterinarian rework quality losses.

OEE

Module version: 4.0.2

Changes in this release are from module version 4.0.0 to 4.0.2.

New features and improvements

The following new features and improvements to functionality were added:

Remove Use OEE checkboxes for all QuickConfigs except where supported

The **Use OEE** checkbox was removed from all Quick Configs except those that currently support OEE: WPL, MCheck2 and Grading.

Bug fixes

The following bugs were fixed:

Error in DB migrations

When running DB migrations, an error occurred when loading module C:\ProgramData\Marel\Innova\Lang\4.0.0\Marel.Mp6.OEE.dll.xlat.xml. This was fixed.

Missing buttons in IMPAQT event editor

In IMPAQT, the buttons for **Previous day** and **Next day** were missing. This was fixed.

Exception populating enum values (baseop)

An exception populating enum values (baseop) was fixed. The **Lang** folder name must match culture name exactly.

OptiPack

Module version: 3.0.2

Changes in this release are from module version 3.0.0 to 3.0.2.

New features and improvements

The following new features and improvements to functionality were added:

Bug fixes

The following bugs were fixed:

Packing Terminal Quick Config

The Packing Terminal Quick Config, currently only used by Innova Manual Yield Sampling Station, didn't work correctly when using M1100/M2200/411 scales. This is now fixed.

Malformed query in Multihead.Overview report

The query for the **Marel.Mp6.OptiPack.Reports.MultiHead.Overview** report was malformed. This is now fixed.

Portioning

Module version: 2.0.1

Changes in this release are from module version 2.0.0 to 2.0.1.

New features and improvements

There are no new features or improvements to functionality to report in this release.

Bug fixes

The following bugs were fixed:

Quick Config import for MS2750

The Quick Config import for the MS2750 was fixed.

Process

Module version: 5.2.1

Changes in this release are from module version 5.0.1 to 5.2.1.

New features and improvements

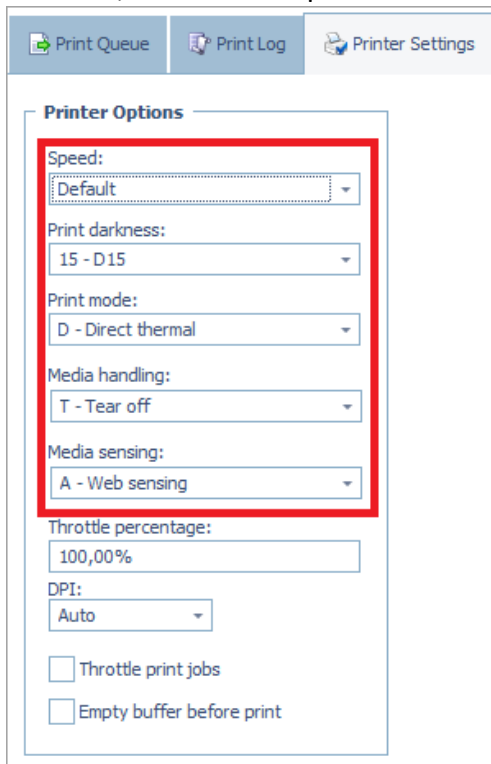
The following new features and improvements to functionality were added:

Default option for Innova Zebra printer driver

A **Default** option was added for a number of settings for the Innova Zebra printer driver. In addition, the **Media Sensing** setting was added to the **Printer Settings** view.

Selecting **Default** means that Innova will not include the relevant command in the print job sent to the printer, allowing a fixed setting on the printer to be used instead.

Some printer manufactures emulate Zebra printers and support the ZPL II programming language that Innova uses in its Zebra driver. In some cases they will support values that are not standard for Zebra. For example, a speed value of 20 inches/min or more for a FoxJet printer. In this case, the **Default** option should be selected and the setting applied on the printer itself.



The screenshot shows the 'Printer Settings' window with three tabs: 'Print Queue', 'Print Log', and 'Printer Settings'. The 'Printer Settings' tab is active, displaying the 'Printer Options' section. A red rectangular box highlights the 'Speed' dropdown menu, which is currently set to 'Default'. Other settings visible include 'Print darkness' (15 - D15), 'Print mode' (D - Direct thermal), 'Media handling' (T - Tear off), 'Media sensing' (A - Web sensing), 'Throttle percentage' (100,00%), and 'DPI' (Auto). There are also two unchecked checkboxes: 'Throttle print jobs' and 'Empty buffer before print'.

Traceability report improvements

Performance improvements were made to standard Traceability reports.

Configure product dependent device settings

The **Product lists** view (formerly only in Yield Control) was recreated in Process as **Marel.Mp6.Process.UI.Windows.Activity.MaterialLists**. It will be removed from Yield Control in a later version.

Product lists					
Clone Autofilter Refresh Confirm Print Operations Update activity					
Active	Code	Name	Short	Process unit	
<input checked="" type="checkbox"/>	prml0002	Default product list	Default pr	MatListPrunit	
<input type="checkbox"/>					

Products				
Active	Sequence	Packing operation	Product	
<input checked="" type="checkbox"/>	1		Beef	
<input checked="" type="checkbox"/>	2		Ham	
<input type="checkbox"/>	3		Pork	
<input type="checkbox"/>				

Product selectors that use the **Activity** selector type now work with process units that use the "process product list" configuration table type in addition to the previous "product" and "product query" configuration table types.

Add PO column to the Lots view

Two new columns, **PO** and **PO code**, with a purchase order lookup dropdown menu, were added to the **Lots** view.

Innova 6.1.1 Release Notes

Lots															
Default															
Status (lot) All															
ID	Active	Name	TOP flock ID	QA Mark 1	Status	Start time	End time	Reference time	Short	Processor	Processor 2	Lot type	Supplier	Slaughter day	PO
1137	<input checked="" type="checkbox"/>	1022110400	1022110400		Available				1022110400	Lupken Mast Gm	Lupken Mast G	Process lot		4.11.2022	ARK-1 06-03-2023

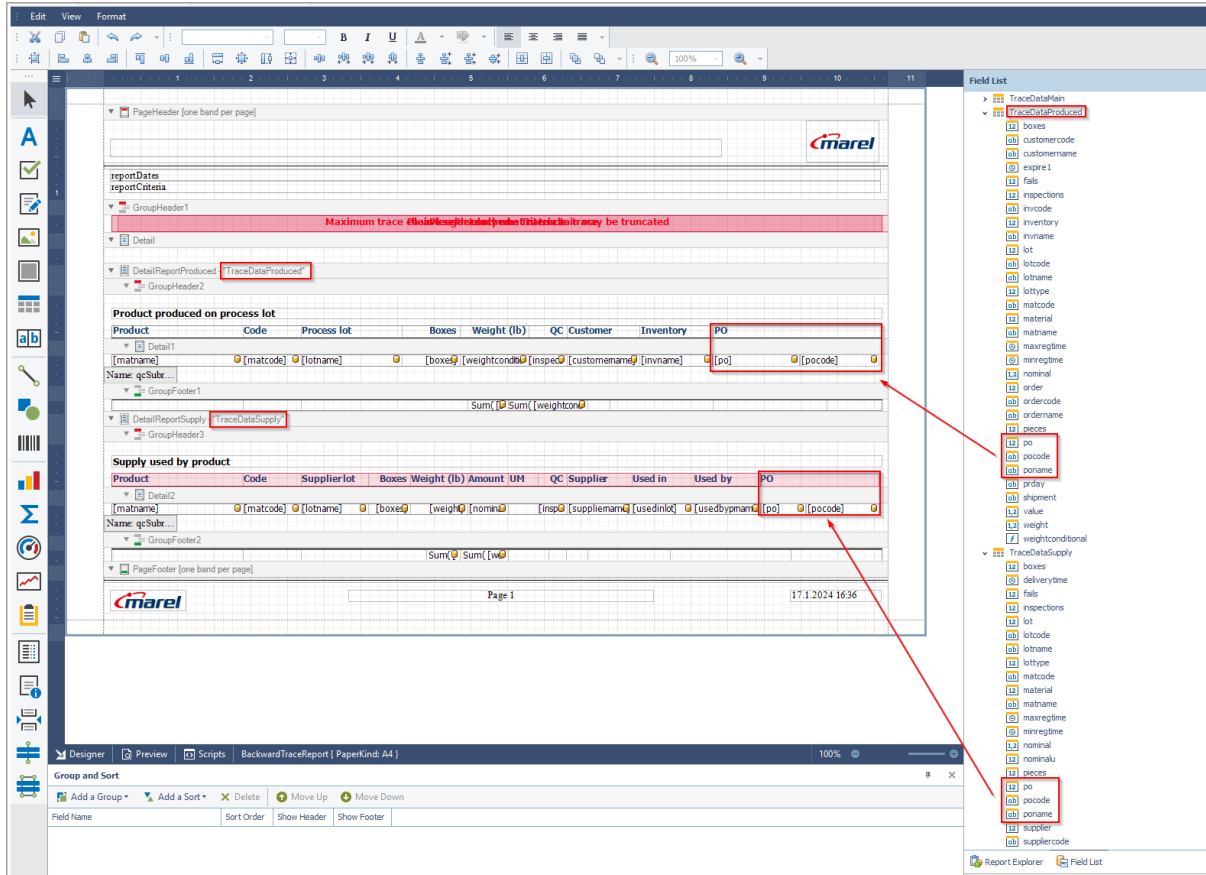
Linked lots		Lot inputs		Lot supply list				
Supply method	Product	Supplier lot	Activated by	Active (lot)	QA Mark 1 (lot)	Supplier (lot)	PO (lot)	PO code (lot)
AtlasTrayItem		22110400_Atlas_Line1		<input checked="" type="checkbox"/>		Lupken Ma...	ARK-2	prpo001061
AtlasTrayItem		22110401_Atlas_Line1		<input checked="" type="checkbox"/>		Lupken Ma...	ARK-3	prpo001063

In addition, two new non-editable columns, **PO (lot)** and **PO code (lot)** were added to the **Lot supply list** detail tab, with reference to the supplier lot PO.

Lots																
Default																
Status (lot) All																
ID	Active	Name	TOP flock ID	QA Mark 1	Status	Start time	End time	Reference time	Short	Processor	Processor 2	Lot type	Supplier	Slaughter day	PO	PO code
1137	<input checked="" type="checkbox"/>	1022110400	1022110400		Available				1022110400	Lupken Mast Gm	Lupken Mast G	Process lot		4.11.2022	ARK-1 06-03-2023	prpo002211

Linked lots		Lot inputs		Lot supply list				
Supply method	Product	Supplier lot	Activated by	Active (lot)	QA Mark 1 (lot)	Supplier (lot)	PO (lot)	PO code (lot)
AtlasTrayItem		22110400_Atlas_Line1		<input checked="" type="checkbox"/>		Lupken Ma...	ARK-2	prpo001061
AtlasTrayItem		22110401_Atlas_Line1		<input checked="" type="checkbox"/>		Lupken Ma...	ARK-3	prpo001063

For custom report design, the columns **po (proc_pos.Po)**, **poname (proc_pos.Name)** and **pocode (proc_pos.Code)** were added to **LotTraceability supply lists** backward and forward trace report datasets.

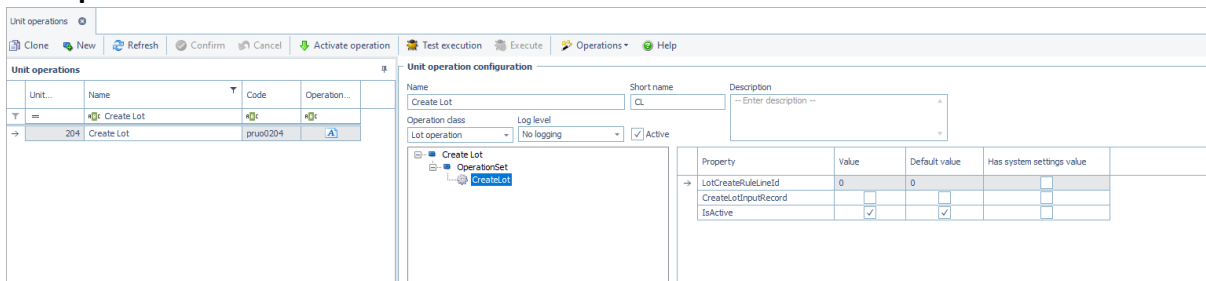


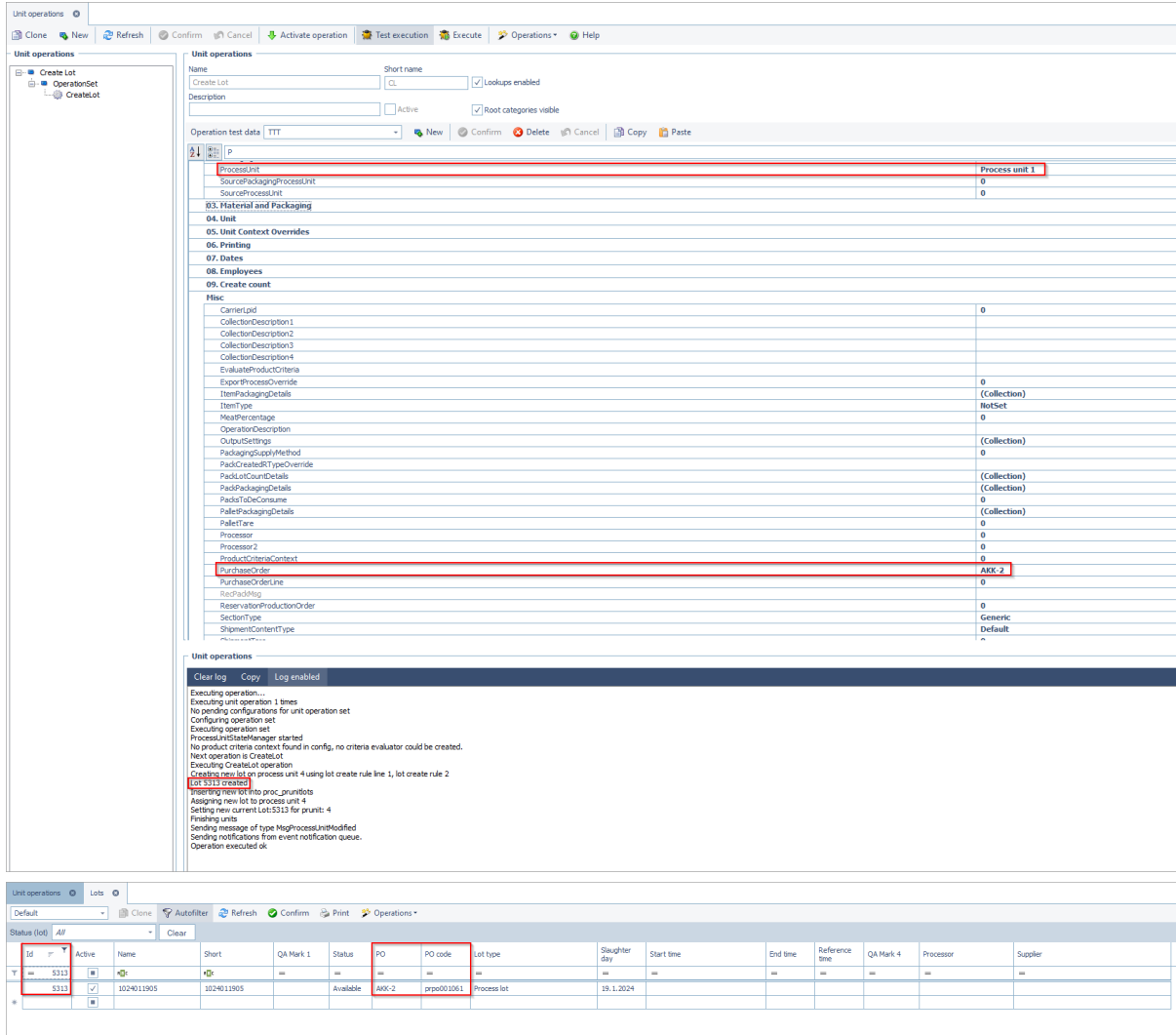
Lastly, support for including the context's current purchase order (`OperationContext.CurrentPurchaseOrder`) was added to the **CreateLot** unit operation.

Load OpData's PurchaseOrder into OperationContext

The Operation context was updated to load purchase orders, if set, from supplied Operation Data. As a result, a purchase order can now be supplied as an operation data parameter when running the **Create Lot** unit operation.

Example:





Bug fixes

The following bugs were fixed:

Marel.Mp6.Core missing from XML data store in new installation

An issue was fixed where Marel.Mp6.Core was missing from the XML data store in new installations.

Fix or delete the ignored tests in Labeling that failed due to float rounding

Tests in Marel.Mp6.Labeling.UI.Tests are now working.

TareSet Lines subgrid does not appear in taresets

The **Tares** detail tab did not appear in the **Tare sets** view. This was fixed and the detail tab is now present.

Tracing causes all UO to fail when it calls RemoveSupplies for a Prunit without SupplyMethods

An issue that caused all unit operations to fail was fixed.

RecordScaleRecordTare option in CreatePack UO has no effect

An issue with the **RecordScaleRecordTare** option in the **CreatePack** unit operation was fixed.

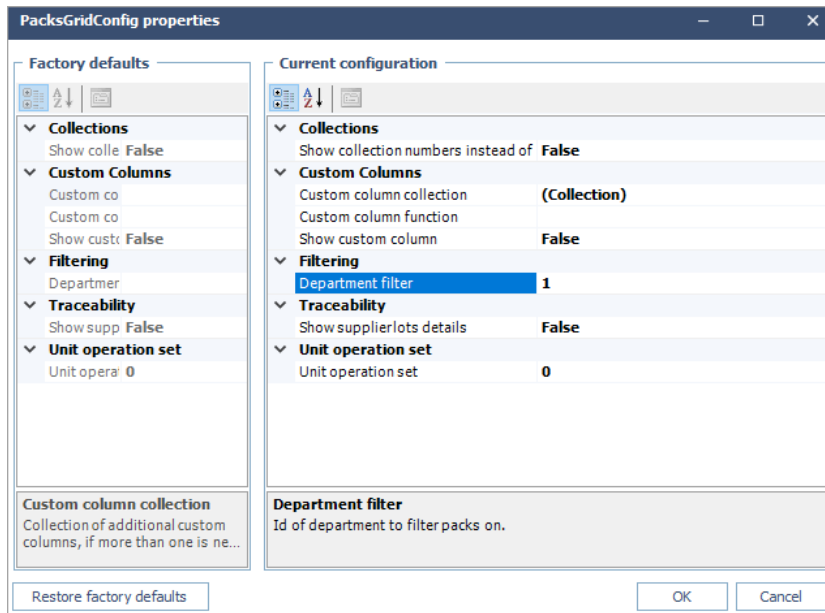
Very large serial numbers fail to scan when using ttraders

When **ttraders** is used with a Logiflex system, Logiflex listens to the physical ID readers and sends Innova an **IdReaderData** message for each read. Previously, Innova read this field as an unsigned 32-bit value. However, some ID cards can contain up to 64 bits of data, resulting in failed processing of this message. This was fixed and Innova now reads this field as an unsigned 64-bit value.

Pack and pallets view workaround

A new configuration property to filter on departments is now available in the Packs and collections (Pallets, Shipments, etc.) views.

The **Department filter** property filters the view based on the department assigned to the process units of the packs or collections.



This configuration is fixed and overrides any visible view filter criteria.

4.2.0 migration install date is greater than some migrations in 5.0.1

An issue with install dates in migrations was fixed.

Setting a grid size for the Lot view does not work Marel.Mp5.Process.UI.M6000.ProcessUnit.ManagePrunitControllerExtension

An issue that prevented the Lot view on IPC from being resized was fixed.

WPL - Standard barcodes using weight when using lbs products

The WinUI was terminated or the barcode was not generated because the weight field was using lbs but the barcode weight was in grams. This was fixed.

WPL - Wrong RTF font selected in some cases

In certain conditions the font name in the comformat could be set to **Default** instead of the actual font name, for example, "Calibri". This was fixed.

WPL - TrueType fonts don't print

If the configuration layout setting **Use Windows TrueType fonts** was set, then there was an error in the font name when it was downloaded to the WPL. This has been fixed. Although it's possible to use Windows TrueType fonts, this is not recommended because it may violate the font license.

Innova 6.1.1 Release Notes

WPL - Preview of WPL/OCM layout fails

The preview of WPL/OCM layouts in the **Items/Packs** view failed if **varname** wasn't set for a barcode with error code: 23. This was fixed.

WPL - Improvement to use TrueType fonts with data fields

It's now possible drag and drop a data value and RTF text fields on WPL static text blocks.

WPL/OCM label not rendering images correctly

An issue that occurred when adding images to labels was fixed.

QC

Module version: 2.0.3

Changes in this release are from module version 2.0.0 to 2.0.3.

New features and improvements

There are no new features or improvements to functionality to report in this release.

Bug fixes

The following bugs were fixed:

Empty values in repeated items fields cannot be edited after inspection is done

Previously, when repeated inspection items were left blank in the inspection, they could not be edited afterward in the **Inspections** view. This is now fixed.

Using required signature on response generates PDA error

When trying to sign a response, a PDA error appeared. This is now fixed.

Unable to add new responses to the Responses view

An issue was fixed that prevented being able to add more than one response in the **Responses** view.

Inspection reports coming up empty

An issue with empty inspection reports was fixed.

GetQueryValue – support for objectid, string and date values

When a formula item with **Get Query Value** was rendered, it put NULL values for items whose values were date, string or objectids. This was fixed.

Empty formulas on IPC

An issue with empty formulas on IPC was fixed.

Formula with context values on Windows UI

Formula items with a context value were displayed correctly on IPC, but the value was empty on Windows UI when other items in the procedure were updated. This was fixed.

Item condition with hidden items

Formulas for item conditions didn't take values of hidden items, but values of hidden items could be used in formulas and getqueryvalues. This was fixed.

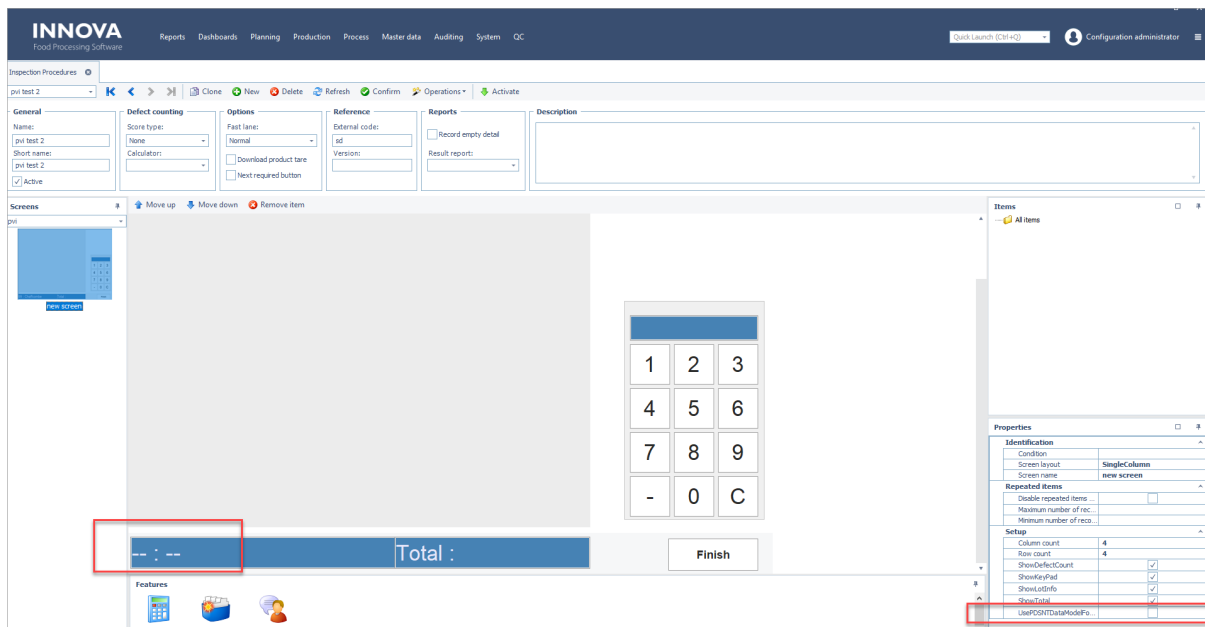
EmployeeDefectsCE not working

An issue with EmployeeDefectsCE not working was fixed.

PVI Inspection Procedure configuration flag

A new configuration flag, **UsePDSNTDataModelForLotInfo**, was added to the PVI Inspection Procedure when using the PVI screen factory.

Instead of selecting lot information from the PDSNT database, the station displays the name of the active Innova lot.



SIS

Module version: 2.0.3

Changes in this release are from module version 2.0.0 to 2.0.3.

New features and improvements

The following new features and improvements to functionality were added:

Bug fixes

The following bugs were fixed:

Remove Marel.Mp6.Core reference

References to Marel.Mp6.Core were removed.

SIS 1st Individual not getting ROLA info when no user in Sequencing Terminal

An issue was fixed where information from ROLA for the first individual was not received when no user was logged in on the **Sequencing** terminal.

ROLA - Cannot assign individual with QaMarks to stables via AssignToStables VE

An issue was fixed that prevented assigning individuals with QA marks to stables.

Known issues

The following are known issues in this release:

RolaIndividualsView (Passport entry)

You must refresh the **RolaIndividualsView (Passport entry)** to activate the filter.

SmartWeigher

Module version: 3.0.2

Changes in this release are from module version 3.0.0 to 3.0.2.

New features and improvements

There are no new features or improvements to functionality to report in this release.

Bug fixes

The following bugs were fixed:

Server programs not starting

An issue was fixed that prevented server programs from starting when the module was used on a system running a Base version higher than 6.0.1.

Missing LoaderData

Missing LoaderData was added to SmartWeigher.

Sol.BoxSorter

Module version: 2.0.1

Changes in this release are from module version 2.0.0 to 2.0.1.

New features and improvements

There are no new features or improvements to functionality to report in this release.

Bug fixes

The following bugs were fixed:

ItemSorter - sorting program line unit operation

An issue with **ItemSorter** was fixed and now the sorting program line unit operation runs when configured.

Trimming

Module version: 4.1.0

Changes in this release are from module version 4.1.0 to 4.1.0.

New features and improvements

The following new features and improvements to functionality were added:

Make out feed locations names more readable - Backwards compatibility required

A new configuration property, **DestinationNamePrefixForGate**, was added to **LogiflexOutput** device controllers, specifically the **LogiFlexOutputVariableNames** device controller. Other known device controllers like **LogiFlexOutputWScales** inherit the **LogiFlexOutputVariableNames** controller.

The configuration can be used to modify the destination label sent in item templates. The default is `<StreamlineInstanceName>.<gate>` (e.g. `streamline.1.1`).

The configuration can then be configured to "streamline.1.outfeed" which will populate the item template for Gate 1 to: "streamline.1.outfeed.1"

Sequence	Device	Description	Product/Output	Two side	Class name	Create controller	Program release sequence	Release sequence side 1	Release sequence side 2
1	StreamLine	Trimming line input scale	ProductOutput	Two side		<input checked="" type="checkbox"/>	<input checked="" type="checkbox"/>	A	A
2	StreamLine	Trimming line output scale	ProductOutput	Two side	Manel.Mpl6.Trimming.Services.Plugins.LogiFlex.LogiFlexOutputVariableNames	<input checked="" type="checkbox"/>	<input checked="" type="checkbox"/>		

```

<!-- A destination name prefix is used for destination labels in item templates: [DestinationNamePrefixForGate] -->
<DestinationNamePrefixForGate />
    
```

New standard poultry streamline with QC station

A new XML configuration property, **DestinationNamePrefixForGate** available in the **LogiflexOutput** trimming device controller

A destination name prefix used for destination labels in item templates: `[DestinationNamePrefixForGate].[gateid]`

Innova 6.1.1 Release Notes

Manual Trimming

Manual Trimming is now available.

Bug fixes

The following bugs were fixed:

Quick config GUI links and RT220 device component problem

An issue with incorrect links in the Quick Config was fixed.

wsserver for FleXitrim not working

An issue was fixed where the wsserver for FleXitrim stations stopped working after updating the module.

Web

Module version: 3.0.1

Changes in this release are from module version 3.0.0 to 3.0.1.

New features and improvements

The following new features and improvements to functionality were added:

Port ValidateRegistration as WebService and improve the Lookup function

SecurePrint Web Service is now available as part of the Web module.

Bug fixes

There are no bug fixes to report in this release.

Web UI

Module version: 3.1.2

Changes in this release are from module version 3.1.1 to 3.1.2.

New features and improvements

There are no new features or improvements to functionality to report in this release.

Bug fixes

The following bugs were fixed:

DataVisualizationWeb and WebUiWeb not starting after installation

See Data Visualization

Dashboards not opening when accessing via IP address instead of host-name

See Data Visualization

Migration from V5 database fails

See Data Visualization

WPL

Module version: 2.2.0

Changes in this release are from module version 2.1.2 to 2.2.0.

New features and improvements

The following new features and improvements to functionality were added:

Support for barcode formats longer than 29 characters

The WPL/OCM system was updated to support barcode formats longer than 29 characters. The maximum length is now 128 characters.

The long barcode format only works on WPL9000 plus machines with 9000 plus print heads. Note that it is not possible to use the same layout on a WPL9000 and a WPL9000+ if the barcode format is more than 29 characters.

With the WPL9000+/OCM9500+, it's now possible to use the GS1-128 barcode wizard.OCM -

Use Unit Operation Client

Calls to the unit operation system were changed to use the Unit Operation Client.

Disable VDF file download

A new WPL System XML property called **UseVdf** was added. It's set to "True" by default to be backwards compatible. If set to "False", then Innova will not create or download the VDF file.

Improve logging when unknown items are discovered

When a "old" comformat was selected on the WPL, instead of selecting the product from Innova, Innova reported the items as unknown comformats. To improve tracing of these items, the log message now contains the long sequence number.

Bug fixes

The following bugs were fixed:

OCM system setup

Device dropdown menus were missing from the **Terminal** and **Reader** columns on the detail tab in the **Packing systems** view. These are now available.

Innova 6.1.1 Release Notes

OCM menu import

When importing the **OCM.xml** menu file, no menu was created in Innova. Now the OCM.xml menu file adds the **OCM system** item to the **System > System Setup** menu.

Band number starts with 2 when running average weight

Previously, the band number was set to "2" when doing average weight with autogenerated multi. This was fixed and the default setting is now "1".